















750W 1.5L
Black Gloden
Drip Coffee Machine



700W 100*100mm
Black Gloden
Toaster



2200W 1.7L
Black Gloden
Kettle



500W 1.5L
Black Gloden
Stand Blender



1300W 5.5L
Black Gloden
Espresso Coffee Machine



① “Black Gloden” series

1 “Black Gloden” series



Kettle

HYSD-DLKE02101BG

FEATURE

- ➔ Capacity:1.7 L
- ➔ Wattage:1,850-2,200,W
- ➔ Certification:GS/CB/CE

LOADING CONTAINER
(20HQ/40GP/40HQ)Qty.:
3752/7680/8672

Coffee Machine

HYSD-DLCM9416BG

FEATURE

- ➔ Coffee machine boiler structure:U-shaped heating tube
- ➔ Capacity:1.5L
- ➔ Wattage:750W
- ➔ Certificate:GS/CE

LOADING CONTAINER
Qty(20GP/40GP/40HQ):
1152/2352/2608

Toaster

HYSD-DLTA1060BG

FEATURE

- ➔ Body:Plastic Toaster Housing
- ➔ Function:CANCEL
- ➔ Bread Size:100x100mm
- ➔ Capacity:2-slice,short slot
- ➔ Wattage:700W
- ➔ Certification:GS/C

LOADING CONTAINER
Qty(40HQ):2940/6024/6708

Food Processor

HYSD-DLFP9083BG

FEATURE

- ➔ GS:220-240V 50-60Hz 500W with juice cup 800W
- ➔ process cup (AS): 2.1L (8CUP)/2.4L (10CUP) full cup
- ➔ working capacity : 1.4L/1.6L
- ➔ Lid safe
- ➔ Basic function: shredding , slicing , S blade
- ➔ Function level: P-0-1-2

LOADING CONTAINER
Qty(MOQ):/

1 “Black Gloden” series



Capsule Coffee Maker

HYSD-DLCM7000BG

FEATURE

- ➔ Electrical parameter: 220-240V/50Hz/960-1145W
- ➔ Comply with GE /LFGB UL/FDA
- ➔ Capacity: 0.65L
- ➔ Capsule system: Nespresso
- ➔ Warm-up time: 40S
- ➔ Pump pressure: 19Bar

LOADING CONTAINER
(20HQ/40GP/40HQ)Qty.:
1286/2626/2998



Espresso Coffee Maker

HYSD-DLCM8502/BG

FEATURE

- ➔ 220-240V/50Hz/1100W
- ➔ 15 bar powerful pressure pump
- ➔ Die-casting aluminum alloy boiler
- ➔ 1.2L detachable transparent water tank
- ➔ 2 cups dual-stainless steel filter

LOADING CONTAINER
Qty(20GP/40GP/40HQ):
928/1912/2160



Capsule Coffee Maker

HYSD-DLCM7036/BG

FEATURE

- ➔ Power: 230V/50Hz/1050W;
- ➔ Certificate: GS/LFGB
- ➔ Water Tank: 0.7L
- ➔ Capsule system: Nespresso
- ➔ Heating time: 40S
- ➔ Pressure: 20Bar
- ➔ Coffee temperature: 72-84°C

LOADING CONTAINER
Qty(40HQ):1212/2520/2930



Espresso Coffee Maker

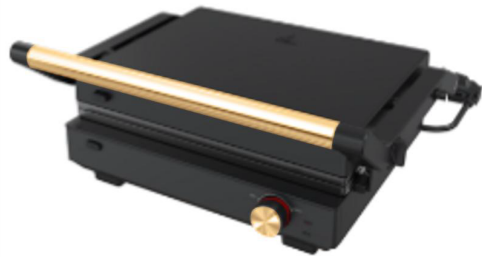
HYSD-DLCM5002BG

FEATURE

- ➔ Electrical parameter: 220-240V/50Hz/1100W
- ➔ Certificated: GS
- ➔ Capacity: 1L
- ➔ Accessories : Two cup dual SS filler(one cup and FSE 5S filter for optional), spoon with tamper

LOADING CONTAINER
(20HQ/40GP/40HQ)Qty.:
1220/2090/2326

1 “Black Gloden” series



Grill

HYSD-DLGC5408BG

FEATURE

- ➔ Spec:120V, 60Hz, 1500W/220-240V, 50-60Hz, 1520-1800W
- ➔ Plate Size : L290*W230mm
- ➔ Housing : PF , Matt finish, all injection black color
- ➔ Cooking Plate : removable grill plates
- ➔ Cooking Plate Temp : 210+/- 20°C

LOADING CONTAINER

Qty(20GP/40GP/40HQ):
1008/2100/2160



Hand Blender

HYSD-DLHB5039C

FEATURE

- ➔ 220-240V/50Hz/800W
- ➔ Plastic (ABS) body + chrome ring of top cover & chrome belt, TPE Button
- ➔ Motor: DC , copper wire
- ➔ Plastic adaptor +Thick SUS blender rod + SUS blade
- ➔ Optional accessories: chopper+ Whisk + measuring cup & lid;
- ➔ Function: 2 speed + stepless variable speed; Have the function of mixing juice or sauce, meat chopping,egg whisking etc

LOADING CONTAINER

➔ Qty(20GP/40GP/40HQ):/



Hand Mixer

HYSD-DLHM1101BG

FEATURE

- ➔ Body:Plastic with S.S.design
- ➔ Speed:6+Turbo
- ➔ 220-240V 50/60Hz 300W

LOADING CONTAINER

Qty(MOQ):5340/10806/13032



Meat Grinder

HYSDA-DLMG5003BG

FEATURE

- ➔ GS:220-240V 50-60Hz 600W
- ➔ KB7min
- ➔ Lock power : 1300W
- ➔ Output :1.0-1.5kgs /mins
- ➔ Motor:76/20,AC motor, Aluminum steel
- ➔ Appearance material: body:PP, Front Deco:ABS, funnel:PP, Press rod:PE

LOADING CONTAINER

(20HQ/40GP/40HQ)Qty. :
5640/11130/13356

1 “Black Gloden” series



Kitchen Machine

HYSD-DLKM6003BBG

FEATURE

Spec:220-240V, 50-60Hz 1500W

Speed setting: 10 speed with turbo

Material : ABS housing

Accessories : 5L bowl Egg white stick, noodles hook, mixing paddle, AS transparent bowl lid, steel bowl.

LOADING CONTAINER
Qty(20GP/40GP/40HQ):

/

Kitchen Machine

HYSD-DLKM3000BG

FEATURE

Spec:220-240V, 50-60Hz 600W

Motor : 8830 pure copper motor

Speed setting: 12 speed stepless

Material : Plastic housing, S.S mixing hook, SUS304 whisker, die-casting beater, AS transparent bowl cover

Accessories : 3.5L SUS304 mixer bowl

LOADING CONTAINER
(20HQ/40GP/40HQ)Qty. :
664/1373/1482

Juice Extractor

HYSD-LH618BG

FEATURE

➔ Spec: 220-240V/50-60Hz/800W

➔ 7020 Copper motor

Housing Material: ABS+SS

➔ 2 Speed with pulse

65mm diameter tube

➔ Pulp cup capacity:1000ml

juice jar capacity: 550ml

➔ VDE plug 2*0.5MM 2 outside 1M

➔

➔ LOADING CONTAINER
Qty(20GP/40GP/40HQ):

/

Espresso Coffee Maker

HYSD-DLCM5002BG

FEATURE

➔ Electrical parameter: 220-

➔ 240V/50Hz/1100W

➔ Certified: GS

➔ Capacity: 1L

Accessories : Two cup dual SS filler(one cup and FSE 5S filter for optional), spoon with tamper

➔ LOADING CONTAINER
(20HQ/40GP/40HQ)Qty. :
1220/2090/2326



900W 1.5L
Smart Polish
Drip Coffee Machine



800W 100*100mm
Smart Polish
Toaster



2200W 1.7L
Smart Polish
Kettle



1000W 2640ml
Smart Polish
Food Processor



1100W 15bar
Smart Polish
Espresso Coffee Machine



2 “Smart Polish” series

2 “Smart Polish” series

SMART



Kettle

HYSD-DLKES5208TSS

FEATURE

- ➔ Capacity:1.7 L
- ➔ Wattage:1,850-2,200,W
- ➔ Certification:GS/CB/CE
- Digital display on the main housing
- Boil dry protection
- Plastic lid
- Plastic base
- Automatic shut-off after boiling

LOADING CONTAINER
(20HQ/40GP/40HQ)Qty.:
1884/3960/4440

SMART



Coffee Machine

HYSD-DLCM1429THSS

FEATURE

- ➔ Body: Polish finish, Touch screen
- LED display
- ➔ Capacity:1.5L
- ➔ Wattage:900W
- ➔ Certificate:GS/CE

LOADING CONTAINER
Qty(20GP/40GP/40HQ):
1008/2008/2346

SMART



Toaster

HYSD-DLTA1760SS

FEATURE

- ➔ Digital touchscreen interface
- ➔ Body:Chrome plated handle slot
- ➔ Function:7-setting browning control,
- cord storage, with removable
- crumbs tray
- ➔ Bread Size:100x100mm
- ➔ Capacity:2-slice,short slot
- ➔ Wattage:800W
- ➔ Certification:GS/C

LOADING CONTAINER
Qty(40HQ):2040/4206/4752



Kitchen Machine

HYSD-DLMG5901SS

FEATURE

- ➔ Noise <72dB(environmental
- <45dB,distance from prototype 1m
- ➔ GS:220-240V 50-60Hz 1000W
- ➔ Lock power :2000W
- ➔ Motor:DC62/45,DC motor
- ➔ Output :1.0-1.5kgs /mins
- ➔ Appearance material
- ➔ blade(SUS420J2),cutter heads(3mm,
- ➔ 5mm;7mm)

LOADING CONTAINER
➔ (20HQ/40GP/40HQ)Qty.: /

2 “Smart Polish” series



SMART



SMART



SMART

Kitchen Machine

HYSD-LH214SCW

FEATURE

- ➔ Spec:220-240V, 50-60Hz 1500W
- ➔ Motor : 8830 pure copper motor
- ➔ Speed setting: 6 speed with turbo
- ➔ Material : ABS housing
- ➔ Accessories : 7L SUS304 mixer bowl, aluminum grinder head and tray, 3SS 420 cutting blades, 1500ml glass juice jar

LOADING CONTAINER
(20HQ/40GP/40HQ)Qty.:

/

Kitchen Machine

HYSD-LH212CSS

FEATURE

- ➔ Body: ABS housing,S/S, LED switch light, LED sreen display
- ➔ Capacity:10L
- ➔ Wattage:220-240V 50-60Hz 2000W
- ➔ Speed control: 6 speed with Turbo
- ➔ Accessory: Dough hook, flat beater, wire whip
- ➔ with anti-slip feet
- ➔ Certificate:GS/CE

LOADING CONTAINER
Qty(20GP/40GP/40HQ):

/

Kitchen Machine

HYSD-LH208SS

FEATURE

- ➔ Digital touchscreen interface
- ➔ Body:Chrome plated handle slot
- ➔ Function:7-setting browning control, cord storage, with removable crumbs tray
- ➔ Bread Size:100x100mm
- ➔ Capacity:2-slice,short slot
- ➔ Wattage:800W
- ➔ Certification:GS/C

LOADING CONTAINER
Qty(40HQ):2040/4206/4752

Hand Blender

HYSD-LH522S

FEATURE

- ➔ Wattage:700 W
- ➔ Material :Plastic ABS + SUS body
- ➔ Motor : 7812DC Permanent Magnet
- ➔ Speed : 2 speed, with control
- ➔ Accessories: 400ml chopper+
- ➔ Whisk + measuring 600ml cup & lid
- ➔ Certification:GS/CB/CE

LOADING CONTAINER
Qty(40HQ):/

2 “Smart Polish” series



Espresso Coffee Machine

HYSD-DLCM5020BASS

FEATURE

- ➔ Visual pressure display · With single boiler, brew coffee or do milk frothing separately
- ➔ **Material:** Plastic body with silver spray painting · S/S Control panel
- ➔ **Capacity:** 2.8L water tank
- ➔ **Bean box capacity:** 250g
- ➔ **Power:** 1350-1550W, 20bar
- ➔ **Certification:** GS/CB/CE

➔ **LOADING CONTAINER**
Qty(20GP/40GP/40HQ):

/



Juice Extractor

HYSD-LH630

FEATURE

- ➔ 85mm diameter tube
- ➔ **Body:** ABS+ Stainless steel housing
- ➔ **Capacity:** Pulp cup 1L, juice jar 1L
- ➔ **Motor:** 8820 copper motor
- ➔ **Wattage:** 600-1200W
- ➔ **Speed:** 2 with pulse

➔ **LOADING CONTAINER**
Qty(20GP/40GP/40HQ):

/



Hand Mixer

HYSD-LH920A

FEATURE

- ➔ 1 pair beaters and 1 pair dough hook
- ➔ **Material:** Stainless steel housing,
- ➔ **Motor:** 5520 copper motor
- ➔ **Wattage:** 200-400W
- ➔ **Speed:** 5 speed, turbo function

➔ **LOADING CONTAINER**
Qty(20GP/40GP/40HQ):

/



Mini Chopper

HYSD-DLMC410ASS

FEATURE

- ➔ **Material:** SUS420 double blade, ABS+sus decoration ring body, glass bowl, anti slip bowl mat
- ➔ **Motor:** AC 54/25
- ➔ **Capacity:** 2L (working capacity 1L)
- ➔ **Wattage:** 500W
- ➔ **Speed:** one speed /two speeds
- ➔ **Certification:** GS

➔ **LOADING CONTAINER**
Qty(20HQ/40GP/40HQ):

/



900W 1.5L
Sliver Blue
Drip Coffee Machine



800W
Sliver Blue
Toaster



2200W 1.7L
Sliver Blue
Kettle



600W 1.75L
Sliver Blue
Stand Blender



1450W
Sliver Blue
Espresso Coffee Machine

3 “Sliver Blue” series

3 “Sliver Blue” series



Kettle

HYSD-DLKES0001ASG

FEATURE

- ➔ Capacity: 1.7 L
- ➔ Wattage: 1,850-2,200, W
- ➔ Certification: **GS/CB/CE**

LOADING CONTAINER

- ➔ (20HQ/40GP/40HQ)Qty.: /

Stand Blender

HYSD-DLBLT1016ASG

FEATURE

- Coffee machine boiler structure: U-shaped heating tube
- ➔ Capacity: 1.75L
- ➔ Wattage: 600W
- ➔ Certificate: **GS/CE**

LOADING CONTAINER

- ➔ Qty(20GP/40GP/40HQ): /

Toaster

HYSD-DLTAB1005ASG

FEATURE

- ➔ Body: Stainless steel housing with coating
- ➔ Function: Defrost/Reheat/Cancel with indicator light
- ➔ Bread Size: **100x100mm**
- ➔ Capacity: 2-slice, short slot
- ➔ Wattage: 800W
- ➔ Certification: **GS/C**

LOADING CONTAINER

- ➔ Qty(40HQ): /

Coffee Machine

HYSD-DLCMD1015

FEATURE

- Inside: PP, outer side: ABS housing with coating
- ➔ Capacity: 1.5L
- ➔ Wattage: 900W
- ➔ Certificate: **GS/CE**

LOADING CONTAINER

- ➔ Qty(20GP/40GP/40HQ): /

3

“Sliver Blue” series



Capsule Coffee Maker

HYSD-DLCM70ASB

FEATURE

- ➔ Electrical parameter: 220-240V/50Hz/1050W
- ➔ Comply with **GE /LFGB UL/FDA**
- ➔ Capacity: 0.65L
- ➔ Preheating: 40S
- ➔ Warm-up time: 40S
- ➔ Pump pressure: 20Bar

LOADING CONTAINER

- ➔ Qty(20GP/40GP/40HQ):/

Espresso Coffee Maker

HYSD-DLCM5428SB

FEATURE

- ➔ 220-240V/50-60Hz/1100W
- ➔ 15 bar powerful pressure pump
- ➔ Die-casting aluminum alloy boiler
- ➔ 1.2L detachable transparent water tank
- ➔ 2 cups dual-stainless steel filter

LOADING CONTAINER

- ➔ Qty(20GP/40GP/40HQ):/

Drip Coffee Maker

HYSD-DLCM3401SB

FEATURE

- ➔ Power: 230V/50-60Hz/900W;
- ➔ Certificate: **GS/LFGB**
- ➔ Water Tank: 0.6L
- ➔ Capsule system: Nespresso
- ➔ Keep warm: 40mins
- ➔ Maximum coffee bean: 36g
- ➔ Coffee temperature: 78-80°C

LOADING CONTAINER

- ➔ Qty(40HQ):/

Espresso Coffee Maker

HYSD-DLCM5712SB

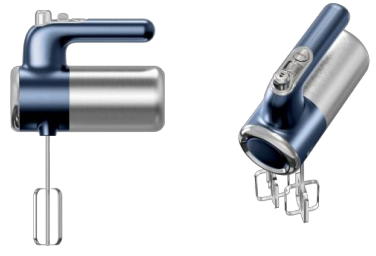
FEATURE

- ➔ Electrical parameter: 220-240V/50-60Hz/1250-1450W
- ➔ Certificated: **GS**
- ➔ Capacity: 1.5L
- ➔ Accessories : 58mm size of aluminum die-casting portal filter, with one cup and two cup stainless steel filter

LOADING CONTAINER

- ➔ (20HQ/40GP/40HQ)Qty./

3 “Sliver Blue” series



Hand Mixer

HYSD-DLHMH1002SB

FEATURE

- ➔ Electrical parameter: 220-240V/50Hz/400W
- ➔ AC motor: 45/30
- ➔ 5 Speed + Turbo
- ➔ Plastic body with front panel in SS
- ➔ Stand-in desgin

LOADING CONTAINER
(20HQ/40GP/40HQ)Qty./

Hand Blender

HYSD-DLHB5038ASB

FEATURE

220-240V/50-60Hz/800W

- ➔ Plastic adaptor + Thick SUS blender rod + SUS blade
- ➔ Motor: DC , copper wire
- ➔ Optional accessories: chopper+ Whisk + measuring cup & lid
- ➔ Funtion: 2 speed + stepless variable speed; Have the function of mixing juice or sauce, meat chopping,egg whisking etc

LOADING CONTAINER
(20GP/40GP/40HQ)/



1000W 1.5L
Sliver Gray
Drip Coffee Machine



850W
Sliver Gray
Toaster



2200W 1.7L
Sliver Gray
Kettle



500W 1.5L
Sliver Gray
Stand Blender



3.5L outer bowl, 3.4L inner bowl
Sliver Gray
Hand Blender

4 “Sliver Gray” series

4 “Sliver Gray” series



Kettle

HYSD-DLKE01328SG

FEATURE

- ➔ Capacity:1.7 L
- ➔ Wattage:1,850-2,200,W
- ➔ Certification:GS/CB/CE

LOADING CONTAINER
➔ (20HQ/40GP/40HQ)Qty./

Coffee Machine

HYSD-DLCM9459SG

FEATURE

- ➔ Plastic housing; Keep warm for 40 minutes
- ➔ Capacity:1.5L
- ➔ Wattage:1000W
- ➔ Certificate:GS/CE

LOADING CONTAINER
➔ Qty(20GP/40GP/40HQ):/

Toaster

HYSD-DLTA1430SG

FEATURE

- ➔ Body:Plastic Toaster Housing
- ➔ Funtion: Defrost/Reheat/Cancel
- ➔ Capacity:2-slice,short slot
- ➔ Wattage:720-850W
- ➔ Certification:GS/C

LOADING CONTAINER
➔ Qty(40HQ):/

Stand Blender

HYSD-DLBLT0002SG

FEATURE

- ➔ Plastic housing
- ➔ 1,5L plastic jug
- ➔ Stainless stel blades
- ➔ 2 speed control with pulse
- ➔ Plastic Capacity:1.5L
- ➔ Wattage:500W

LOADING CONTAINER
➔ Qty(20GP/40GP/40HQ):/

4 "Sliver Gray" series



Hand Mixer

HYSD-DLHM1101SG

FEATURE

- ➔ Electrical parameter: 220-240V/50Hz/400W
- ➔ 6 Speed + Turbo
- ➔ Plastic body with front panel in SS
- ➔ Stand-in desgin

LOADING CONTAINER
➔ (20HQ/40GP/40HQ)Qty./

Hand Mixer

HYSD-DLHM5058SG

FEATURE

- ➔ Capacity: 3.5L outer bowl, 3.4L inner bowl
- ➔ Two plastic bowls
- ➔ Anti-slip feet on the bowl bottom
- ➔ Accessories: stainless steel beater
- ➔ handheld use and desktop use

LOADING CONTAINER
➔ (20HQ/40GP/40HQ)Qty./

Hand Blender

HYSD-DLHB5032SG

FEATURE

- ➔ 220-240V/50-60Hz/250W
- ➔ Plastic connection +SUS shaft (detachable) + Blade: SUS301
- ➔ DC Motor: 37/39, copper wire
- ➔ Optional accessories: 500ml Chopper bowl,Whisk, Mearsuring cup
- ➔ Funtion: 2 speed; Have the function of mixing juice or sauce etc;The optional accessories : Chopping, whisking etc;

LOADING CONTAINER
➔ Qty(20GP/40GP/40HQ):/

Kitchen Machine

HYSD-DL

FEATURE

- ➔ GS:
- ➔ Lock power :
- ➔ Motor:
- ➔ Output :
- ➔ Appearance material

LOADING CONTAINER
➔ (20HQ/40GP/40HQ)Qty. : /

4 "Sliver Gray" series



Food Processor

HYSD-DLFP9083BG

FEATURE

- ➔ GS:220-240V 50-60Hz 500W with juice cup 800W
- ➔ process cup (AS) : 2.1L (8CUP)/2.4L (10CUP) full cup
- ➔ working capacity : 1.4L/1.6L
- ➔ Lid safe
- ➔ Basic function: shredding , slicing , S blade
- ➔ Function level: P-0-1-2

LOADING CONTAINER

Qty(MOQ):/

Hand Mixer

HYSD-DLHM140C

FEATURE

- ➔ Electrical parameter: 220-240V/50Hz/450W(AC motor)
- ➔ level 1 with low speed starting (around 550 RPM)
- ➔ 5 speed + Turbo
- ➔ plastic body;with PP stroage box

LOADING CONTAINER

(20HQ/40GP/40HQ)Qty:/

Meat Grinder

HYSDA-DLMG5003BG

FEATURE

- ➔ GS:220-240V 50-60Hz 600W
- ➔ KB7min
- ➔ Lock power : 1300W
- ➔ Output :1.0-1.5kgs /mins
- ➔ Motor:76/20,AC motor, Aluminum steel
- ➔ Appearance material: body:PP, Front Deco:ABS, funnel:PP, Press rod:PE

LOADING CONTAINER

(20HQ/40GP/40HQ)Qty. : 5640/11130/13356



800W 1.5L
Cream
Drip Coffee Machine



800W
Cream
Toaster



2200W 1.7L
Cream
Kettle



400W 1.5L
Cream
Stand Blender



650W 5L
Cream
Kitchen Machine

5 “Sliver Gray” series

5 "Cream" series



Kettle

HYSD-DLKEP1005C

FEATURE

- ➔ Capacity:1.7 L
- ➔ Wattage:1,850-2,200,W
- ➔ Certification:GS/CB/CE

LOADING CONTAINER

- ➔ (20HQ/40GP/40HQ)Qty:./

Coffee Machine

HYSD-DLCMD1021C

FEATURE

- ➔ Plastic housing; anti-drip and keep warm function;With nylon filter and water gauge
- ➔ Capacity:1.5L
- ➔ Wattage:800W
- ➔ Dial: ON/OFF switch
- ➔ Certificate:GS/CE

LOADING CONTAINER

- ➔ Qty(20GP/40GP/40HQ): /

Toaster

HYSD-DLTAB101C

FEATURE

- ➔ Body:Plastic Toaster Housing
- ➔ Funtion: Defrost/Reheat/Cancel
- ➔ Capacity:2-slice,short slot
- ➔ Wattage: 800W
- ➔ Certification:GS/C

LOADING CONTAINER

- ➔ Qty(40HQ):/

Stand Blender

HYSD-DLBLT1011C

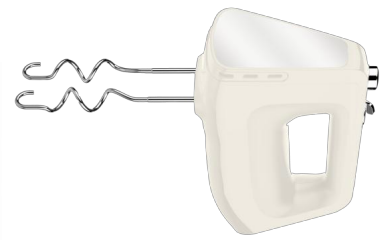
FEATURE

- ➔ 220-240V/50-60Hz;120V/60Hz
- ➔ Plastic housing
- ➔ 1,5L plastic jug
- ➔ Stainless steel blades
- ➔ 2 speed control with pulse
- ➔ Plastic Capacity:1.5L
- ➔ Wattage:400W

LOADING CONTAINER

- ➔ Qty(20GP/40GP/40HQ):/

5 "Cream" series



Stand Blender

HYSD-DLBL9025C

FEATURE

- ➔ 220-240V/50-60Hz; 120V/60Hz
- ➔ Stainless steel body
- ➔ 1,75L glass jug
- ➔ 76/40 copper-clad
- ➔ 2 speed control with pulse
- ➔ Blades: SUS30
- ➔ Plastic Capacity:1.5L
- ➔ Wattage:400W

LOADING CONTAINER

Qty(20GP/40GP/40HQ):/

Hand Blender

HYSD-DLHB5039C

FEATURE

- ➔ 220-240V/50Hz/800W
- ➔ Plastic (ABS) body + chrome ring of top cover & chrome belt, TPE Button
- ➔ Motor: DC , copper wire
- ➔ Plastic adaptor +Thick SUS blender rod + SUS blade
- ➔ Optional accessories: chopper+ Whisk + measuring cup & lid;
- ➔ Function: 2 speed + stepless variable speed; Have the function of mixing juice or sauce, meat chopping,egg whisking etc

LOADING CONTAINER

➔ Qty(20GP/40GP/40HQ):/

Hand Mixer

HYSD-DLHM140C

FEATURE

- ➔ Electrical parameter: 220-240V/50Hz/450W(AC motor)
- ➔ level 1 with low speed starting (around 550 RPM)
- ➔ 5 speed + Turbo
- ➔ plastic body;with PP storage box

LOADING CONTAINER

➔ (20HQ/40GP/40HQ)Qty: /

Kitchen Machine

HYSD-DLKM5012C

FEATURE

- ➔ 220-240V/50-60Hz/650W
- ➔ Capacity:5L
- ➔ Speed setting: 10 speeds (stepless)
- ➔ Material : Plastic body;Stainless steel bowl (SUS304)
- ➔ Accessories : AS transparent bowl cover;die-casting beater and dough hook;SU304 whisker; Stainless steel mixing hook
- ➔ Funtion: head-up power

LOADING CONTAINER

➔ (20HQ/40GP/40HQ)Qty.: /

5 "Cream" series



Grill

HYSD-DLST005C

FEATURE

- 220-240V/50-60Hz/700W
- ➔ Size: TBA
- ➔ Plate Size: L236*W125mm
- ➔ Housing Material: PF
- ➔ Plate Temp: 200+/- 20°C
- ➔ Open Angle: 105°
- ➔

LOADING CONTAINER

➔ Qty(20GP/40GP/40HQ):/

Food Processor

HYSD-DLFP9083BG

FEATURE

- ➔ process cup (AS):
- working capacity:
- ➔ Basic function:
- Function level:
- ➔
- ➔
- ➔
- ➔

LOADING CONTAINER

➔ Qty(MOQ):/